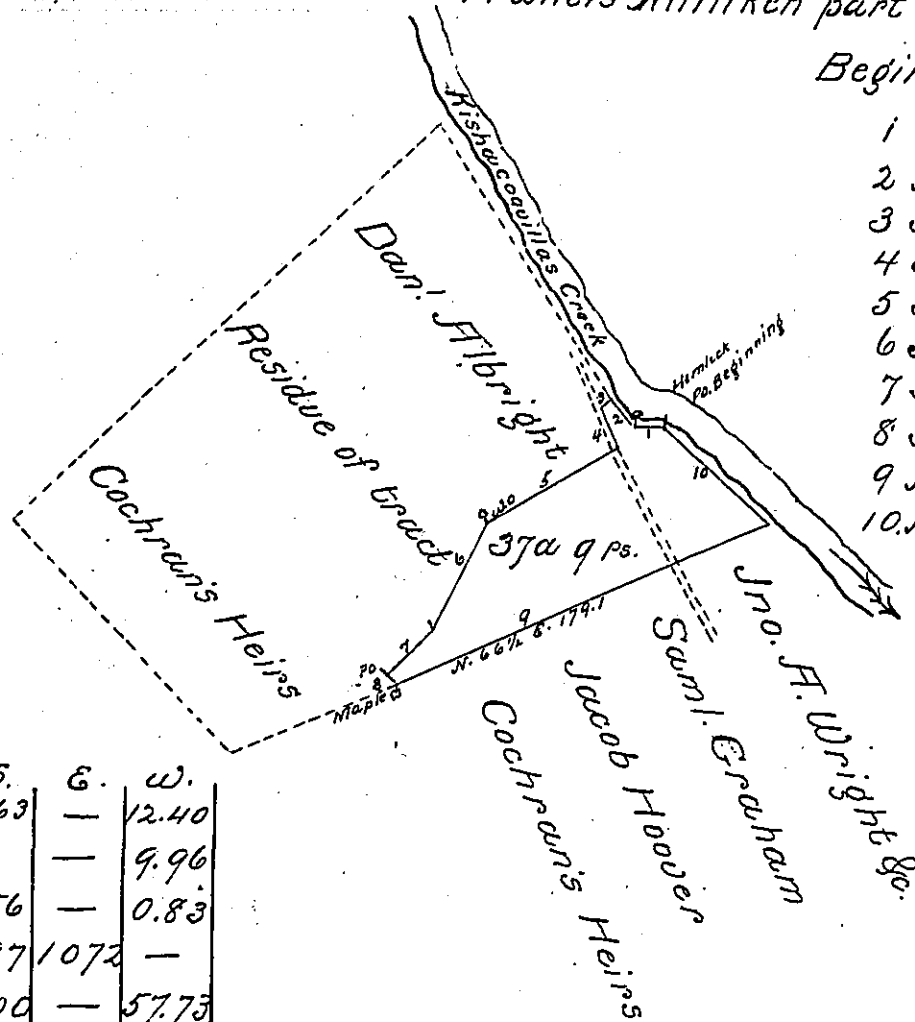


Francis Milliken part of Rebecca Harrison

Begin at post

- 1 S. 82 1/2 W. 12.5 Hemlock
- 2 N. 50. W. 13.0 post
- 3 S. 55 3/4 W. 1.0 Edge of Pike
- 4 S. 37 1/2 E. 17.6 Bo-
- 5 S. 59 1/2 W. 67.0 w.o.
- 6 S. 27 1/2 W. 50.0 Stub in road
- 7 S. 39 1/2 W. 24.8 post
- 8 S. 19 3/4 E. 4.0 Maple
- 9 N. 66 1/2 E. 179.1 Edge of Creek
- 10 N. 51. W. 59.8 post Beginning



	N.	S.	E.	W.
1 S. 82 1/2 W. 12.5	—	1.63	—	12.40
2 N. 50. W. 13.0	8.36	—	—	9.96
3 S. 55 3/4 W. 1.0	—	0.56	—	0.83
4 S. 37 1/2 E. 17.6	—	1397	1072	—
5 S. 59 1/2 W. 67.0	—	34.00	—	57.73
6 S. 27 1/2 W. 50.0	—	44.35	—	33.09
7 S. 39 1/2 W. 24.8	—	19.14	—	15.78
8 S. 19 3/4 E. 4.0	—	3.76	1.35	—
9 N. 66 1/2 E. 179.1	71.41	—	164.22	—
10 N. 51. W. 59.8	37.64	—	—	46.50
	117.41	117.41	176.29	176.29

A Draught of 37a 9 perches of land with allowance of 6 per cent for Roads &c. situate in Derry Township Mifflin County Penn^a part of a larger tract surveyed for Rebecca Harrison Sept. 12th. 1766 called "what ye please" in pursuance of an application No 45 dated August 1st. 1766 The above part Resurveyed Nov. 29th. 1852 for Francis Milliken the present owner who desires a patent for it

John Weekes C. S.

To J. Porter Brawley Esq.
Surveyor General of Penn^a

IN TESTIMONY that the above is a copy of the original remaining on file in the Department of Internal Affairs of Pennsylvania, made conformably to an Act of Assembly approved the 16th day of February, 1833, I have hereunto set my Hand and caused the Seal of said Department to be affixed at Harrisburg, this fifth day of December 1899

James W. Latta
Secretary of Internal Affairs.